

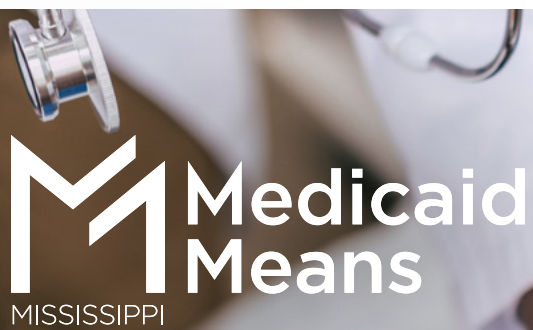


MHAP

MISSISSIPPI
HEALTH ADVOCACY
PROGRAM

State Economy Impact Data Brief

 **Medicaid
Means**
MISSISSIPPI

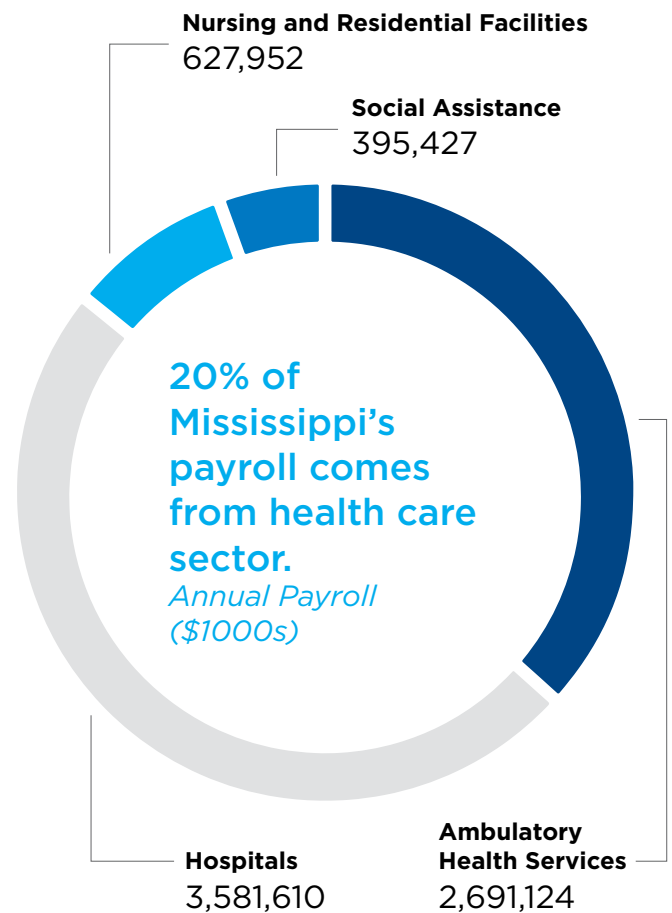


Good-paying Jobs for Mississippi Residents

In countless Mississippi communities, Medicaid means economic growth that ensures hard-working residents can access good-paying jobs in healthcare and the numerous small businesses that support hospitals, clinics, and pharmacies.

The health care industry plays a pivotal role in the Mississippi economy. In 2016, our state had over 4,800 health care related establishments employing 141,794 Mississippians and generated nearly \$7 billion in payroll. These numbers accounted for 15 percent of the state's total employment and over 20 percent of the total payroll.

Over 65,000 Mississippians are employed in hospitals throughout the state.



Health Care Sector and the Mississippi Economy, 2016

Service Category	Employment	Annual Payroll (\$1000s)	Establishments
Ambulatory Health Services	48,520	2,691,124	4,312
Physician Offices	19,286	1,501,031	1,649
Dental Offices	5,565	264,146	864
Offices of Other Health Practitioners	6,004	231,487	989
Outpatient Care Centers	6,696	279,739	325
Medical and Diagnostic Laboratory	1,113	56,831	127
Home Health Care Services	7,671	272,223	270
Other Ambulatory Health Care Services	2,185	85,667	88
Hospitals	70,108	3,581,610	104
General Medical Surgical Hospitals	63,909	3,355,834	86
Psychiatric/Substance Abuse Hospitals	4,241	152,816	7
Specialty Hospitals	1,958	72,960	11
Nursing and Residential Facilities	23,166	627,952	421
Nursing Facilities	16,638	480,405	186
Resident. Mental/Sub. Abuse Facilities	2,511	65,557	54
Community Care Facilities for Elderly	3,414	65,653	153
Other Residential Facilities	603	16,337	28
Social Assistance	23,883	395,427	1,369
Total - Health Care and Social Assistance	165,677	7,296,113	6,206
Total - Health Care (excluding social assistance)	141,794	6,900,686	4,837
Total - Mississippi Economy	939,322	34,356,961	58,850

Health Care Share of Mississippi's Economy

15%

20%

8.2%

According to a 2013 study conducted by the Mississippi Health Advocacy Program, the economic and employment impact of expanding Medicaid in Mississippi would have been highly lucrative.

Had Mississippi expanded Medicaid, the effect of increased federal spending would yield up to \$8.9 billion in additional economic activity 2014-2020, garnering an additional \$6.4 billion by 2018. The overall impact would generate over \$23 billion in economic activity for Mississippi.

**Estimated Economic
Impact of Federal
Spending on
Mississippi Medicaid
Expansion (*millions*)**

High Take-up Scenario	Direct	Indirect	Total Impact
2014	\$2,061	\$1,292	\$3,354
2015	\$2,096	\$1,314	\$3,410
2016	\$2,100	\$1,316	\$3,417
2017	\$2,010	\$1,259	\$3,269
2018	\$2,024	\$1,268	\$3,292
2019	\$2,043	\$1,280	\$3,323
2020	\$2,014	\$1,262	\$3,276
Total 2014-2020	\$14,349	\$3,276	\$23,342

Data also shows that Medicaid expansion would have increased employment in Mississippi by nearly 20,000 workers during the 2014-2020 period.

**Estimated
Employment Impact
of Mississippi
Medicaid Expansion
(*Intermediate
Scenario*)**

Intermediate Scenario	Direct	Indirect	Total Impact
2014	12,524	7,216	19,740
2015	12,750	7,339	20,089
2016	12,775	7,353	20,128
2017	12,229	7,034	19,263
2018	12,323	7,084	19,407
2019	12,439	7,150	19,589
2020	12,269	7,049	19,318
Average 2014-20	12,473	7,175	19,648

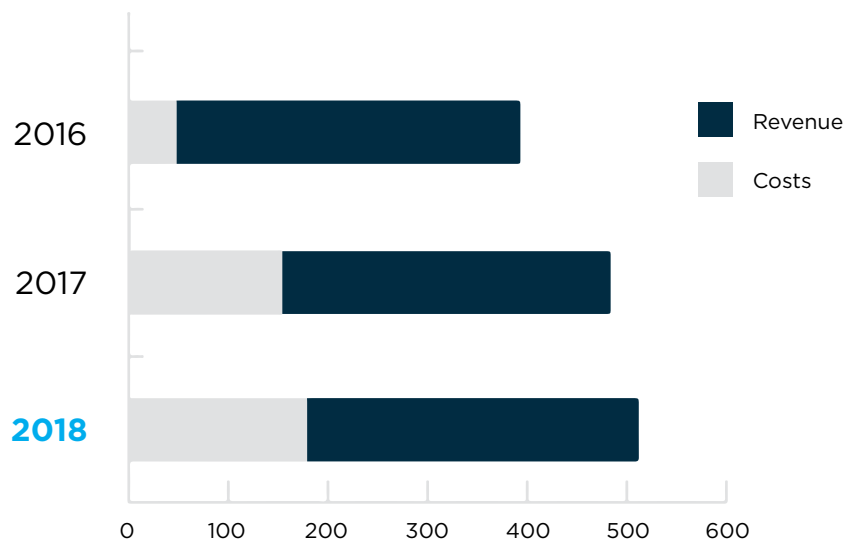
Medicaid expansion would have generated up to \$2.3 billion in additional state tax revenue and increase the overall state revenue by \$1.4 billion between 2014 and 2020, when calculated using a 10.1 average tax rate.

Estimated Impact of Medicaid Expansion on Mississippi State Tax Revenues *(in millions)*

Had Mississippi expanded Medicaid, the state could have garnered over **\$300 million in increased tax revenue** by 2018.

High Take-up Scenario	MS Costs of Expansion	Increased Tax Revenues \$339	Net Impact
2014	(\$47)	--	\$291
2015	(\$48)	\$344	\$3,410
2016	(\$48)	\$345	\$297
2017	(\$154)	\$330	\$176
2018	(\$179)	\$333	\$154
2019	(\$204)	\$336	\$131
2020	(\$275)	\$331	\$56
Total 2014-2020	(\$957)	\$2,358	\$1,401

Cost/Revenue Analysis of Medicaid Expansion in Mississippi



taxes include personal and corporate income taxes, sales and property taxes, and other taxes

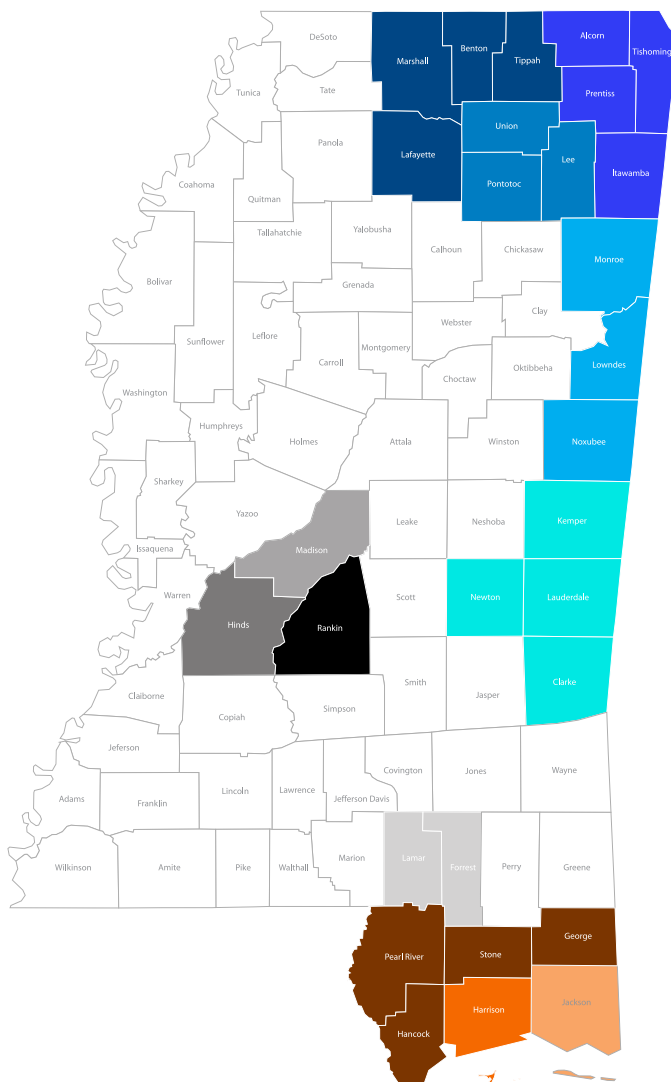


Local Economy Impact Data Brief

Growth for Local Economies

Expanding Medicaid in Mississippi would benefit the state economy overall, meaning local governments and economies would also profit from the additional federal dollars and through overall revenue and job market stimulation.

A 2013 study conducted by the Mississippi Health Advocacy Program found the direct economic impact of Medicaid expansion for sets of contiguous counties in Mississippi would have ranged from \$225 to \$636 million dollars from 2014-2020.



County Groups

Counties have been grouped by Public Use Microdata Area (PUMA), the smallest identifiable geographic areas available in the American Community Survey data.

- Benton, Marshall, Lafayette, Tippah
- Alcorn, Itawamba, Prentiss, Tishomingo
- Lee, Pontotoc, Union
- Noxubee, Lowndes, Monroe
- Clark, Kemper, Lauderdale, Newton
- Rankin
- Hinds (Jackson)
- Hinds (Outside Jackson), Madison
- Lamar, Forrest
- George, Hancock, Pearl River, Stone
- Jackson
- Harrison

In Clarke, Kemper, Lauderdale, and Newton counties, Medicaid expansion would generate nearly \$50 million in federally financed healthcare annually.

**Federal Spending on MS
Medicaid Expansion by PUMA -
Intermediate Scenario (in millions)**

2016	2017	2018	2019	2020	Total 2014-20
63.0	60.3	60.7	61.3	60.4	430.6
42.5	40.6	40.9	41.3	40.7	290.1
45.2	43.2	43.5	43.9	43.3	308.6
46.7	44.7	45.0	45.4	44.8	318.9
52.2	49.9	50.3	50.8	50.1	356.6
39.7	38.0	38.2	38.6	38.1	271.1
93.1	89.1	89.7	90.5	89.3	635.9
41.9	40.1	40.4	40.8	40.2	286.5
66.1	63.2	63.7	64.3	63.4	451.3
66.8	63.9	64.4	65.0	64.1	456.5
76.0	72.7	73.2	73.9	72.9	519.3
40.1	38.4	38.6	39.0	38.5	273.9

By 2018, the total projected economic impact of Medicaid expansion in certain counties ranges from \$316 million in Rankin County to \$605 million in Harrison County. In the Jackson area, the new

federal dollars spent on Medicaid would generate nearly \$150 million of new economic activity annually.

**Total Economic Impact of
Medicaid Expansion by PUMA -
Intermediate Scenario (in millions)**

2016	2017	2018	2019	2020	Total 2014-20
102.5	98.1	98.8	99.7	98.3	700.5
69.1	66.1	66.6	67.2	66.2	471.8
73.5	70.3	70.8	71.5	70.4	501.9
75.9	72.6	73.2	73.9	72.8	518.7
84.9	81.2	81.8	82.6	81.4	580.2
64.6	61.8	62.2	62.8	61.9	441.0
151.4	144.9	145.9	147.3	145.2	1,034.3
68.2	65.3	65.7	66.4	65.4	466.0
107.5	102.8	103.6	104.5	103.0	734.2
108.7	104.0	104.7	105.7	104.2	742.6
123.7	118.3	119.1	120.3	118.6	844.7
65.2	62.4	62.9	63.4	62.5	445.6

Medicaid expansion would have increased employment and created roughly 3,500 jobs in Lee, Pontotoc, and Union Counties (00400); 5,000 jobs in Lamar and Forest Counties (001900); and

over 7,000 jobs in the Jackson area of Hinds County by 2018. Overall estimates indicate averages at anywhere from 616 to 1,455 jobs created annually between 2014-2020.

**Federal Spending on MS
Medicaid Expansion by PUMA -
Intermediate Scenario (in millions)**

	2016	2017	2018	2019	2020	Total 2014-20
	998	955	962	971	957	978
	672	643	648	654	645	659
	715	684	689	696	686	701
	739	707	712	719	709	724
	826	791	797	804	793	810
	628	601	605	611	603	616
	1,473	1,410	1,420	1,434	1,414	1,445
	664	635	640	646	637	651
	1,046	1,001	1,008	1,018	1,003	1,025
	1,058	1,012	1,020	1,029	1,015	1,037
	1,203	1,151	1,160	1,171	1,155	1,180
	635	607	612	618	609	622

Reference the map on page 7.